



# GAT MONTHLY MEMBERSHIP PROGRESS REPORT

Results as of: 2/28/2023

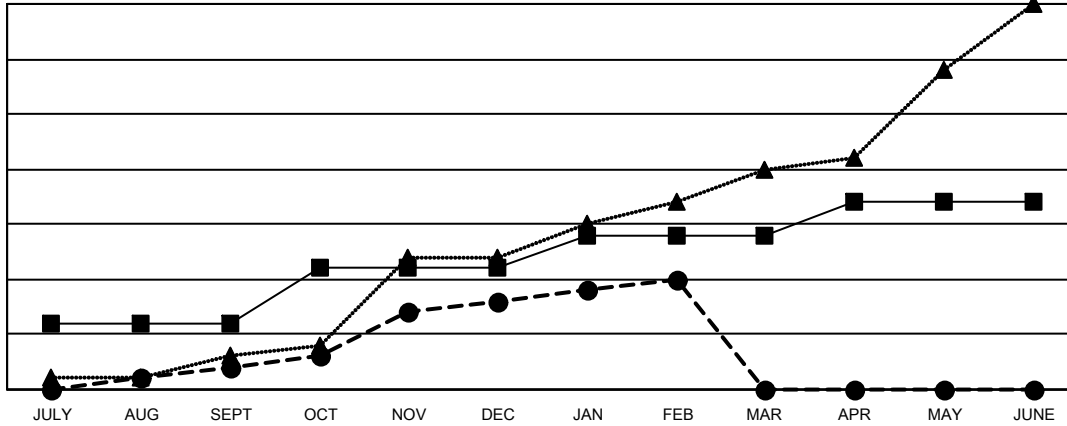
Multiple District 316

LOCATION: INDIA

Clubs			
RESULTS FOR 2022-2023			
QUARTER	NEW CLUB GOAL	NEW CLUBS	DROPPED CLUBS
JULY/AUG/SEPT	6	2	52
OCT/NOV/DEC	5	6	29
JAN/FEB/MAR	3	2	2
APR/MAY/JUNE	3	0	0

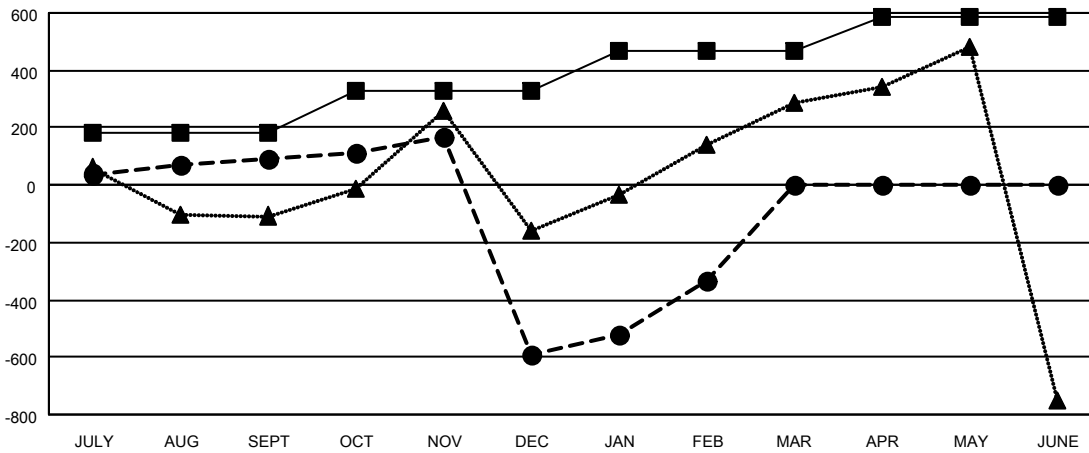
Members			
RESULTS FOR 2022-2023			
QUARTER	MEMBER GROWTH NET GOAL	MEMBER GROWTH ACTUAL	DROPPED MEMBERS ACTUAL (including transfers)
JULY/AUG/SEPT	185	290	182
OCT/NOV/DEC	145	296	958
JAN/FEB/MAR	135	415	49
APR/MAY/JUNE	120	0	0

GOALS AND ACTUAL NEW CLUBS CUMULATIVE



- - CURRENT YEAR GOALS FOR NEW CLUBS
- - CURRENT YEAR ACTUAL NEW CLUBS
- ▲ - LAST YEAR ACTUAL NEW CLUBS

GOALS AND ACTUAL MEMBERS CUMULATIVE



- - MEMBER GROWTH NET GOAL
- - MEMBER GROWTH ACTUAL
- ▲ - LAST YEAR MEMBERSHIP ACTUAL

DROPPED CLUBS: 83	
<b>DROPPED MEMBERS</b>	
DECEASED	30
CLUB CANCELLED	623
OTHER	536
<b>TOTAL</b>	<b>1,189</b>

138 CLUBS OF 458 ADDED 1 OR MORE NEW MEMBERS

[CLICK HERE FOR CUMULATIVE MEMBERSHIP DATA](#)

GENDER DISTRIBUTION	
MALE	10,436 (79.58%)
FEMALE	2,676 (20.41%)
NON BINARY	0 (0.00%)
PREFER NOT TO ANSWER	2 (0.02%)
<b>TOTAL FAMILY UNIT MEMBERS</b>	<b>4,957</b>
<b>FAMILY MEMBERS PAYING HALF DUES</b>	<b>3,137</b>